

# 广西医科大学国际教育学院 School of International Education

电话 Tel: +86-771-5357401

电邮 Email: admission@gxmu.edu.cn, gmufso@aliyun.com

网址 Website: <https://gjy.gxmu.edu.cn/cn/>

地址 Address: 中国广西南宁市双拥路22号广西医科大学国际教育学院  
No. 22 Shuangyong road, School of International  
Education, Guangxi Medical University, Nanning City,  
Guangxi, P.R. China.

邮编 Post Code: 530021



## 广西医科大学 GUANGXI MEDICAL UNIVERSITY

厚德励志 博学弘医

■ Tel  
+86-771-5357401

■ Email  
admission@gxmu.edu.cn  
gmufso@aliyun.com

■ Website  
<https://gjy.gxmu.edu.cn/cn/>



# 01 学校简介

## INTRODUCTION

广西医科大学创建于1934年11月21日，坐落在广西壮族自治区首府南宁市，是全国建校较早的22所医学院校之一，是全国最早定点招收国际学生、港澳台学生和侨学生的医学院校之一，是教育部批准的有招收本科临床医学专业（英语授课）留学生资格的首批30所高校之一。经过近一个世纪的发展，已经成为广西医学教育、医学研究、临床医疗和预防保健的中心，先后为广西、中国乃至世界各地输送了20多万高素质、高层次的医学人才。

2020年5月广西医科大学成为自治区人民政府与国家卫生健康委员会共建的高校，2021年成为自治区党委、政府重点支持建设国内同类一流大学的高校。

截止2024年10月，学校各类在校生5.9万多人。其中，全日制本科在校学生1.8万多人，硕博研究生约1万人，职业专科生1.3万人和来华留学生及港澳台生421人。学生来自中国各地和海外32个国家。

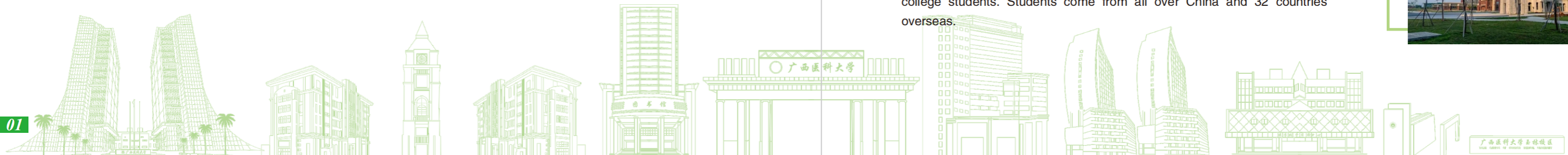
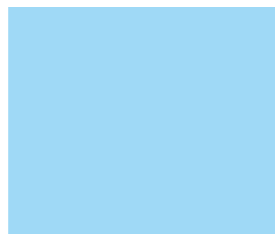
Guangxi Medical University (GXMU), founded on November 21, 1934, is located in Nanning, the capital city of Guangxi Zhuang Autonomous Region. GXMU is one of the 22 earliest founded medical colleges in China. It is one of the earliest medical universities in China to enroll international students, Hong Kong, Macao, Taiwan students, and overseas Chinese students. It is also one of the first 30 medical universities in China that are qualified to enroll MBBS students approved by Ministry of Education.

GXMU became the co-constructed university of National Health Commission and the government of Guangxi Zhuang Autonomous Region in 2020, May. In the year of 2021, GXMU has been listed as the key construction medical university in China by the CPC and the government of Guangxi Zhuang Autonomous Region.

After nearly a century of development, GXMU has become the center of medical education, medical research, clinical treatment and public health care in Guangxi.

It has nurtured over 200 thousand highly competent medical talents and professionals for Guangxi, China and even around the world.

As of October 2024, the school has more than 59,000 students of all types. Among them, there are more than 18,000 full-time undergraduate students, about 10,000 postgraduate students, more than 13,000 vocational college students. Students come from all over China and 32 countries overseas.





## 02 学科实力 DISCIPLINE STRENGTH

学校现有专任教师2403人，其中硕士生导师1713人，博士生导师402人，享受国务院政府特殊津贴专家55名，国家级教学团队2个。

学校具有从学士、硕士到博士完整医学教育培养体系，现拥有医学、理学、工学、文学、管理学、法学、教育学等7大学科门类。学校现有本科专业32个，除了临床医学、预防医学、口腔医学、药学等专业外，还有运动康复、健康服务与管理、医学信息工程、医疗保险、养老服务管理、智能医学工程等新专业。

Guangxi Medical University currently has more than 2403 full-time teachers, including 1713 master's supervisors, 402 doctoral supervisors, 55 experts enjoy the special government allowance of The State Council, and 2 national teaching teams.

The school has a complete medical education and training system ranging from bachelor's, master's, and doctoral degrees. It currently has 7 university disciplines, including medicine, science, engineering, literature, management, law, and education. The school currently has 32 undergraduate majors. In addition to clinical medicine, preventive medicine, dentistry, and pharmacy, there are also new majors such as exercise rehabilitation, health service and management, medical information engineering, medical insurance, elderly care service management, and intelligent medical engineering.

ESI全球前1%  
ESI Top 1%

临床医学 Clinical Medicine (ESI TOP 1.4%)	病理学与毒理学 Pathology and Toxicology	生物与生物化学 Biology and Biochemistry	分子生物学与遗传学 Molecular Biology and Genetics	免疫学 Immunology
---------------------------------------------	----------------------------------------	----------------------------------------	------------------------------------------------	-------------------



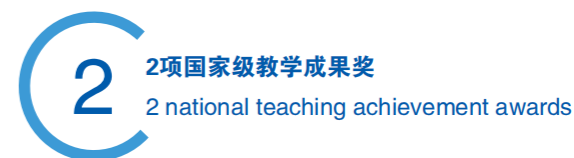
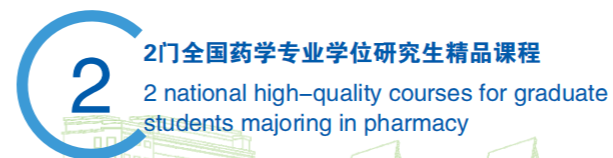
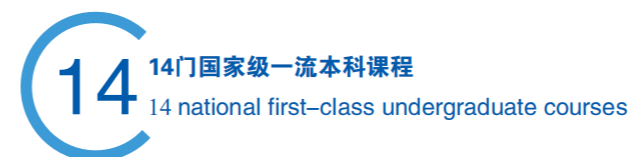
1个国家重点（培育）学科  
1 National Key Cultivating  
Discipline  
肿瘤学 Oncology



19个国家临床重点专科  
19 National Key Clinical  
Specialties



2个国家中医药管理局重点专科  
2 Key Specialties of State  
Administration of Traditional  
Chinese Medicine



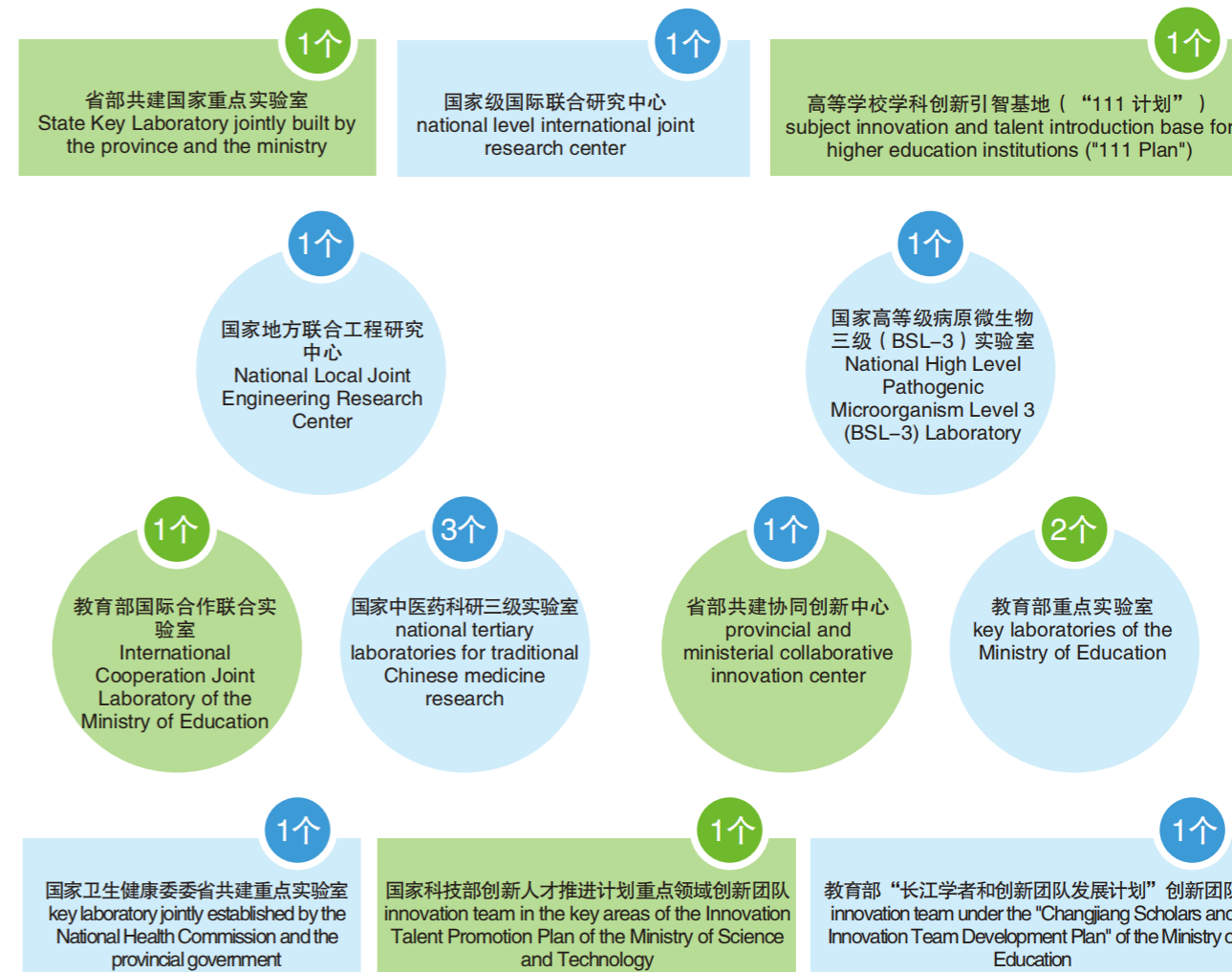
# 03 科研成果 SCIENTIFIC RESEARCH ACHIEVEMENTS

广西医科大学在区域常见病、多发病的防治研究等多个领域，特色优势显著，处于国际国内领先水平。

Guangxi Medical University is at the leading international and domestic level in the prevention and treatment of regional common diseases and frequent-onset diseases.



## 实验室 Laboratories



“十三五”以来新增省部级科技类奖项 **100** 项、发表英文高水平论文 **6228** 篇  
 Since the 2016, **100** provincial and ministerial science and technology awards have been added and **6,228** high-level English papers have been published



# 04 学校设施 FACILITIES

广西医科大学拥有南宁-校本部、南宁-武鸣校区、玉林校区和五象校区（在建）4个校区，共占地约3300亩。拥有完备的教学机构、先进的教学仪器设备和教学公共设施。

学校设有二级学院19个，建有实践教学基地189家，现有直属附属医院5所、非直属附属医院10所、教学医院13所、实习医院19所。

学校的临床技能培训中心，总面积约1.2万平方米，不仅是广西最大的临床医学实践教学平台，也是国家级大学生实践教育基地，同时也是“国家级医师资格考试实践技能考试与考官培训基地”和“国家执业医师资格考试临床实践技能考试基地”。

学校图书馆拥有丰富的中、外文馆藏资源。馆舍总面积约5.6万平方米，阅览室座位数3200余个。现有馆藏纸质图书155.38万册，纸质中、外文期刊5400多种，中、外文电子资源数据库85个，电子图书191.9万册，电子期刊4.9万册，学位论文920.85万册，音视频4.5万多个小时。

学校建有综合体育馆、室内游泳馆、田径场、足球场、篮球场、网球场、风雨球馆、健身房等体育场馆和设施，可满足学生开展各类体育运动。

5个食堂共12个餐厅全天为师生服务。每个校区都设有清真餐厅，满足不同的饮食需求。

留学生公寓为双人间，均有安排有空调、独立卫生间、热水器等生活设施。



Guangxi Medical University currently has 4 campuses, namely Nanning Campus, Wuming Campus, Yulin Campus, and Wuxiang Campus (under construction), covering an area of approximately 2.2 square kilometers. We have complete teaching institutions, advanced teaching instruments and equipment, and teaching public facilities.

The university has 19 secondary colleges, 189 practice teaching bases, 5 directly affiliated hospitals, 10 non-directly affiliated hospitals, 13 teaching hospitals and 19 practice hospitals.

The clinical skills training center has a total area of approximately 12000 m<sup>2</sup>. It is not only the largest clinical medical practice teaching platform in Guangxi, but also a national level practical education base for university students, as well as the "National Physician Qualification Examination Practical Skills Examination and Examiner Training Base" and "National Practicing Physician Qualification Examination Clinical Practical Skills Examination Base".

The 3 libraries in GXMU have rich Chinese and foreign language learning resources. The total area of the libraries is 56,000 square meters, with over 3200 reading room seats. There are currently over 1.55 million paper books in the library, over 6300 paper Chinese and foreign language journals, 85 Chinese and foreign language electronic resource databases, 1.9 million electronic books, 49549 electronic journals, 9.2 million academic dissertations, and 4.5 thousand hours of audio and video.

The university has sports venues and facilities such as a comprehensive sports center, indoor swimming pool, track and field field, football field, basketball court, tennis court, and gym, which can meet the needs of students to engage in various sports activities.

A total of 12 restaurants in 5 canteens serve teachers and students all day, and each campus has a separate halal restaurant to meet different dietary needs.

The international student apartment is a double room with living facilities such as air conditioning, independent bathrooms, and water heaters.





# 05 国际医学教育与对外交流合作

## INTERNATIONAL MEDICAL EDUCATION AND FOREIGN EXCHANGE AND COOPERATION

学校致力于培养热衷服务健康事业，具备良好职业素质，具有创新精神和临床实践能力的应用型国际人才。自1978年开始招收留学生至今，已经培养了85个国家和地区的近3000名国际学生。

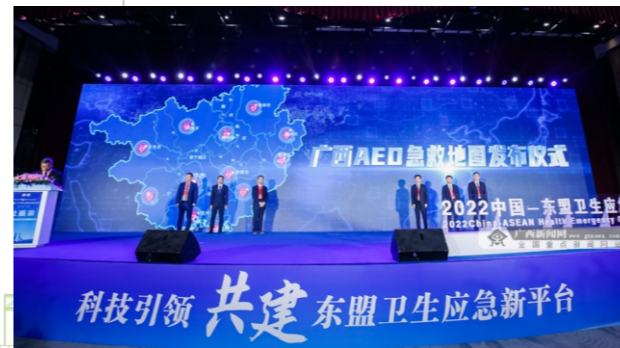
完善的教学设施、雄厚的师资科研水平、完备的教育教学体系使广西医科大学的医学国际教育获得了中国教育部和国际社会的广泛认可。临床医学（全英授课）项目被列为全国20所典范院校之一。

广西医科大学与世界各国、尤其是东盟各国的48所大学、医院及学术机构等保持友好合作关系，在教育、科研、医疗技术等多个领域进行了广泛的国际合作，开展了包括互派学者、互派学生、合作研究等各种形式的合作项目。近10年来，先后开展国际学术交流1000余人次。

The school is committed to cultivating applied international talents who are passionate about serving the health industry, possess good professional qualities, innovative spirit, and clinical practice ability. Since 1978, we have been recruiting international students and have trained more than 3000 international students from 85 countries and regions

Excellent facilities and strong teaching and research faculty in the university provides students with a comprehensive education system. International medical education in Guangxi Medical University has been gaining credence by the Chinese Ministry of Education and has received popular recognition among the international community. The MBBS program (taught in English) run by the university has been listed as one of the 20 exemplary universities in China .

Guangxi Medical University maintains friendly cooperative relationships with 48 universities, hospitals, and academic institutions from various countries around the world, especially ASEAN countries. It has conducted extensive international cooperation in various fields such as education, scientific research, and medical technology, and has carried out various forms of cooperation projects, including exchanging scholars, students, and collaborative research.



生物靶向诊治国家国际联合研究中心  
National and International Joint Research Center for Biotargeted Diagnosis and Treatment

教育部骨与软组织再生修复国际合作联合实验室  
Joint Laboratory for International Cooperation in Bone and Soft Tissue Regeneration and Repair, Ministry of Education

中国—东盟地中海贫血防治国际研究和培训中心  
China ASEAN International Research and Training Center for the Prevention and Treatment of Thalassemia

肝脏损伤与修复基础及临床应用研究学科创新引智基地  
Liver injury and repair of basic and clinical application research subject innovation base

中国（广西）—东盟新发传染病联合实验室  
China (Guangxi) ASEAN Joint Laboratory for Emerging Infectious Diseases





## 06

留学生招生本科专业  
UNDERGRADUATE PROGRAMS for  
INTERNATIONAL STUDENTS**临床医学 Clinical Medicine (Chinese medium)**

学制5年，获医学学士。  
FIVE-YEAR ACADEMIC  
Bachelor of Medicine & Bachelor of Surgery

**临床医学 Clinical Medicine (English medium)**

学制6年，获医学学士。  
SIX-YEAR ACADEMIC Bachelor of Medicine  
& Bachelor of Surgery

**儿科学 Pediatrics**

学制5年，获医学学士。  
FIVE-YEAR ACADEMIC  
Bachelor of Medicine

**麻醉学 Anesthesiology**

学制5年，获医学学士。  
FIVE-YEAR ACADEMIC  
Bachelor of Medicine

**医学影像学 Medical Imaging**

学制5年，获医学学士。  
FIVE-YEAR ACADEMIC  
Bachelor of Medicine

**口腔医学 Stomatology**

学制5年，获医学学士。  
FIVE-YEAR ACADEMIC  
Bachelor of Dental Science

**预防医学 Preventive Medicine**

学制5年，获医学学士。  
FIVE-YEAR ACADEMIC  
Bachelor of Medicine

**妇幼保健医学 Maternal and Child Health Medicine**

学制5年，获医学学士。  
FIVE-YEAR ACADEMIC  
Bachelor of Dental Science

**医学检验技术 Medical Laboratory Science**

学制4年，获理学学士。  
FOUR-YEAR ACADEMIC  
Bachelor of Science

**助产学 Midwifery**

学制4年，获理学学士。  
FOUR-YEAR ACADEMIC  
Bachelor of Science

**康复治疗学 Therapeutic Recreation**

学制4年，获理学学士。  
FOUR-YEAR ACADEMIC  
Bachelor of Science

**医学实验技术 Medical Experimental Technology**

学制4年，获理学学士。  
FOUR-YEAR ACADEMIC  
Bachelor of Science

**智能医学工程 Intelligent Medical Engineering**

学制4年，获工学学士。  
FOUR-YEAR ACADEMIC  
Bachelor of Engineering

**运动康复 Exercise Rehabilitation**

学制4年，获理学学士。  
FOUR-YEAR ACADEMIC  
Bachelor of Science

**护理学 Nursing**

学制4年，获理学学士。  
FOUR-YEAR ACADEMIC  
Bachelor of Science

**卫生检验与检疫**

**Sanitary Inspection and Quarantine**  
学制4年，获理学学士。  
FOUR-YEAR ACADEMIC  
Bachelor of Science

**药理学 Pharmacology**

学制4年，获理学学士。  
FOUR-YEAR ACADEMIC  
Bachelor of Science

**中药学 Traditional Chinese Pharmacy**

学制4年，获理学学士。  
FOUR-YEAR ACADEMIC  
Bachelor of Science

**生物技术 Biotechnology**

学制4年，获理学学士。  
FOUR-YEAR ACADEMIC  
Bachelor of Science

**生物医学工程 Biomedical Engineering**

学制4年，获工学学士。  
FOUR-YEAR ACADEMIC  
Bachelor of Engineering

**医学信息工程 Medical Information Engineering**

学制4年，获工学学士。  
FOUR-YEAR ACADEMIC  
Bachelor of Engineering

**信息管理与信息系统 Information Management and Information System**

学制4年，获管理学学士。  
FOUR-YEAR ACADEMIC  
Bachelor of Administration

**公共事业管理 (卫生事业管理方向)**

**Public Affairs Administration (Direction of Public Health Management)**  
学制4年，获管理学学士。  
FOUR-YEAR ACADEMIC  
Bachelor of Administration

**健康服务与管理 Health Services and Management**

学制4年，获管理学学士。  
FOUR-YEAR ACADEMIC  
Bachelor of Administration

**养老服务管理 Elderly Care Service Management**

学制4年，获管理学学士。  
FOUR-YEAR ACADEMIC  
Bachelor of Administration

# 07 硕士研究生专业 SPECIALTIES OF MASTER'S DEGREE

序号 No.	专业 Major	学制 Duration	授课语言 Teaching Language
1	动物学Zoology	3	汉语 Chinese
2	生理学Physiology	3	汉语 Chinese
3	微生物学microbiology	3	汉语 Chinese
4	遗传学genetics	3	汉语 Chinese
5	细胞生物学Cell Biology	3	汉语 Chinese
6	生物化学与分子生物学Biochemistry and Molecular Biology	3	汉语 Chinese
7	人体解剖与组织胚胎学Human Anatomy and Histoembryology	3	汉语 Chinese
8	免疫学immunology	3	汉语 Chinese
9	病原生物学Pathogenic Biology	3	汉语 Chinese
10	病理学与病理生理学Pathology and Pathophysiology	3	汉语 Chinese
11	内科学Internal Medicine	3	汉语 Chinese
12	儿科学Pediatrics	3	汉语 Chinese
13	老年医学Geriatrics	3	汉语 Chinese
14	神经病学Neurology	3	汉语 Chinese
15	皮肤与性病学Dermatology and Venerology	3	汉语 Chinese
16	影像医学与核医学Imaging Medicine and Nuclear Medicine	3	汉语 Chinese
17	临床检验诊断学Clinical Laboratory Diagnosis	3	汉语 Chinese
18	外科学Surgery	3	汉语 Chinese
19	妇产科学Obstetrics and Gynecology	3	汉语 Chinese
20	眼科学Ophthalmology	3	汉语 Chinese
21	耳鼻咽喉科学Otolaryngology	3	汉语 Chinese
22	肿瘤学oncology	3	汉语 Chinese
23	康复医学与理疗学Rehabilitation Medicine and Physiotherapy	3	汉语 Chinese
24	麻醉学Anesthesiology	3	汉语 Chinese
25	急诊医学Emergency Medicine	3	汉语 Chinese
26	全科医学General Medicine	3	汉语 Chinese
27	重症医学Critical Care Medicine	3	汉语 Chinese
28	中西医结合基础 Fundamentals of Integrated Traditional Chinese and Western Medicine	3	汉语 Chinese
29	中西医结合临床 Integrated Traditional Chinese and Western Medicine Clinical Practice	3	汉语 Chinese
30	医学技术Medical Technology	3	汉语 Chinese
31	骨科学Orthopedics	3	汉语 Chinese

序号 No.	专业 Major	学制 Duration	授课语言 Teaching Language
32	临床病理Clinical pathology	3	汉语 Chinese
33	放射肿瘤学Radiation Oncology	3	汉语 Chinese
34	放射影像学Radiography	3	汉语 Chinese
35	超声医学Ultrasound medicine	3	汉语 Chinese
36	口腔基础医学Basic Oral Medicine	3	汉语 Chinese
37	口腔临床医学Clinical dentistry	3	汉语 Chinese
38	口腔医学Stomatology	3	汉语 Chinese
39	流行病学与卫生统计学Epidemic and Health Statistics	3	汉语 Chinese
40	劳动卫生与环境卫生学occupational and environmental health	3	汉语 Chinese
41	卫生毒理学Hygiene Toxicology	3	汉语 Chinese
42	儿少卫生与妇幼保健学Childhood Health and Maternal and Child Health	3	汉语 Chinese
43	卫生毒理学Hygiene Toxicology	3	汉语 Chinese
44	医学心理学Medical Psychology	3	汉语 Chinese
45	健康教育与健康促进Health education and health promotion	3	汉语 Chinese
46	公共卫生public health	3	汉语 Chinese
47	药物化学Pharmaceutical Chemistry	3	汉语 Chinese
48	药剂学Pharmacy	3	汉语 Chinese
49	生药学Pharmacognosy	3	汉语 Chinese
50	药物分析学Pharmaceutical Analysis	3	汉语 Chinese
51	药理学pharmacology	3	汉语 Chinese
52	药学pharmacy	3	汉语 Chinese
53	护理学Nursing	3	汉语 Chinese
54	社会医学与卫生事业管理Social Medicine and Health Management	3	汉语 Chinese
55	医学信息管理Medical Information Management	3	汉语 Chinese
56	公共管理public administration	3	汉语 Chinese
57	医学生物化学与分子生物学Medical Biochemistry and Molecular Biology	3	汉语 Chinese
58	再生医学regenerative medicine	3	汉语 Chinese
59	生物医学工程biomedical engineering	3	汉语 Chinese
60	社会工作Social work	3	汉语 Chinese
61	社会保障social security	3	汉语 Chinese

当年具体招生专业及导师名单，请扫描二维码登录广西医科大学研究生网站查询  
Please scan the QR code and log in to the graduate website of Guangxi Medical University for the specific enrollment majors and list of mentors of that year





# 08 博士研究生专业 SPECIALTIES OF DOCTORAL DEGREE

序号 No.	专业 Major	学制 Duration	授课语言 Teaching Language
1	人体解剖与组织胚胎学Human Anatomy and Histoembryology	3	汉语 Chinese
2	免疫学immunology	3	汉语 Chinese
3	病原生物学 Pathogenic Biology	3	汉语 Chinese
4	病理学与病理生理学Pathology and Pathophysiology	3	汉语 Chinese
5	医学生物化学与分子生物学Medical Biochemistry and Molecular Biology	3	汉语 Chinese
6	转化医学Translational medicine	3	汉语 Chinese
7	医学生理学Medical Physiology	3	汉语 Chinese
8	内科学Internal Medicine	3	汉语 Chinese
9	外科学Surgery	3	汉语 Chinese
10	妇产科学Obstetrics and Gynecology	3	汉语 Chinese
11	眼科学Ophthalmology	3	汉语 Chinese
12	耳鼻咽喉科学Otolaryngology	3	汉语 Chinese
13	儿科学Pediatrics	3	汉语 Chinese
14	老年医学Geriatrics	3	汉语 Chinese
15	神经病学Neurology	3	汉语 Chinese
16	皮肤病与性病学Dermatology and Venereology	3	汉语 Chinese
17	影像医学与核医学Imaging Medicine and Nuclear Medicine	3	汉语 Chinese
18	肿瘤学oncology	3	汉语 Chinese
19	康复医学与理疗学Rehabilitation Medicine and Physiotherapy	3	汉语 Chinese
20	急诊医学Emergency Medicine	3	汉语 Chinese
21	全科医学General Medicine	3	汉语 Chinese
22	重症医学Critical Care Medicine	3	汉语 Chinese
23	骨科学Orthopedics	3	汉语 Chinese

序号 No.	专业 Major	学制 Duration	授课语言 Teaching Language
24	麻醉学Anesthesiology	3	汉语 Chinese
25	临床病理Clinical pathology	3	汉语 Chinese
26	临床检验诊断学Clinical Laboratory Diagnosis	3	汉语 Chinese
27	发射肿瘤学Emission Oncology	3	汉语 Chinese
28	超声医学Ultrasound medicine	3	汉语 Chinese
29	口腔基础医学Basic Oral Medicine	3	汉语 Chinese
30	口腔临床医学Clinical dentistry	3	汉语 Chinese
31	口腔医学Stomatology	3	汉语 Chinese
32	流行病与卫生统计学Epidemic and Health Statistics	3	汉语 Chinese
33	劳动卫生与环境卫生学occupational and environmental health	3	汉语 Chinese
34	卫生毒理学Hygiene Toxicology	3	汉语 Chinese
35	药物化学Pharmaceutical Chemistry	3	汉语 Chinese
36	药剂学Pharmacy	3	汉语 Chinese
37	药理学pharmacology	3	汉语 Chinese
38	社会医学与公共卫生管理Social Medicine and Public Health Management	3	汉语 Chinese
39	再生医学regenerative medicine	3	汉语 Chinese

当年具体招生专业及导师名单，请扫描二维码登录广西医科大学研究生网站查询  
Please scan the QR code and log in to the graduate website of Guangxi Medical University for the specific enrollment majors and list of mentors of that year



# 09 非学历汉语培训项目

## NON-DEGREE CHINESE LANGUAGE PROGRAM

### 一. 课程介绍

班级	教学内容	学习目标	学习时间	开课学期	备注
初级汉语班	综合、口语、听力、汉字、初级阅读、初级写作 HSK4辅导	以HSK4级为学习目标的零起点学生	2个学期	秋季学期 春季学期*	*春季班开放申请时间请关注学校新闻
中级汉语班	中级汉语综合、中级口语、听力、阅读、汉语写作 HSK5级辅导	具有相当 HSK4 级水平、以 HSK5级为学习目标的学生	2个学期	秋季学期	
医学专业课程先导班	数学、物理、生物、化学、医学汉语表达 HSK5级辅导	具有 HSK4 级或以上水平，并以医学类汉语授课专业本科或研究生学习为目标的学生	1个学期	春季学期	

注：所有非学历课程都包含丰富的中国文化体验和实践学习

### 二. 申请及开学时间

申请时间：

秋季班：每年5月1日至8月15日

春季班：每年10月1日至1月15日

开学时间：

秋季班：每年9月

春季班：每年3月

具体日期以录取通知书为准

### Courses

CLASS TYPE	COURSE	GOALS	DURATION	BEGINNING SEMESTER	NOTE
Elementary Class	Elementary Chinese Grammar Listening Spoken Chinese Chinese characters Reading comprehension Elementary writing HSK 4 Training	Basic Chinese students with HSK4 as their learning goal	2 semesters	Autumn Spring*	* The spring class may not be enrolled every year, please follow the school news for details
INTERMEDIATE CLASS	Intermediate Chinese Reading Comprehension Listening Writing Scientific Chinese Reading HSK 5 Training	Students with a comparable level of HSK4, with HSK5 as their learning objective	2 semesters	Autumn	
PRE-MEDICAL CLASS	Mathematics, Physics, Biology, Chemistry Commonly used medical Chinese expressions HSK 5 Training	Students with HSK Level 4 or above and aiming for undergraduate or postgraduate study in Chinese-taught majors in medicine	1 semester	Spring	

Note: All non-degree courses include Chinese cultural experience courses in addition to the language courses listed above

### Application and school opening time

APPLICATION TIME

Fall Class: May 1 to August 15 each year

Spring class: October 1 to January 15 each year

OPENNING TIME

Fall class: September each year

Spring class: Every March

The exact date is subject to the Admission letter

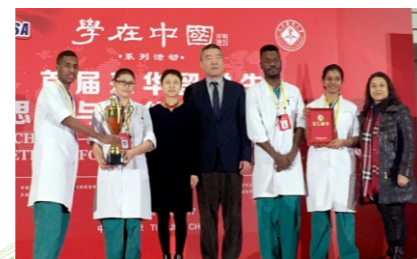


# 10 奖学金项目介绍

## SCHOLARSHIP

### 奖学金项目目录 (不完全名单)

名称	申请范围	类型	申请时间及途径	备注
中国政府奖学金	本科、硕士、博士新生	全额奖学金	各奖学金子项目申请时间和申请方法不同 请关注“留学中国”和广西医科大学国际教育学院网站查阅相关项目报名通知	留学中国: <a href="https://www.campuschina.org/index.html">https://www.campuschina.org/index.html</a> 广西医科大学国际教育学院: <a href="https://gjy.gxmu.edu.cn/cn/zsxc/jxj/">https://gjy.gxmu.edu.cn/cn/zsxc/jxj/</a>
广西政府东盟国家留学生奖学金	本科、硕士、博士东盟国家新生	全额奖学金	每年3月-6月, 请关注广西医科大学国际教育学院网站相关通知或联系本国留学生派遣部门	
广西医科大学新生校长奖学金	自费学习的本科、研究生新生	年度一次性评选	无需个人申请, 入学后, 学校将根据当年新入学学生成绩和人数, 按比例评定	参考学生入学成绩和汉语水平等级成绩
广西医科大学优秀国际学生奖学金	在校学习的全日制学历生	年度一次性评选	注意校内通知	奖项包括: 优秀学习奖 优秀文体奖 优秀学生干部奖 等



广西医科大学

### List of Scholarship Programs (incomplete list)

NAME	APPLICANT RANGE	TYPE	TIME AND APPROACH	NOTE
Chinese Government Scholarship (CSC Scholarship)	Undergraduate, Master's, and Doctoral Freshmen of the Year	Full scholarship	The application time and method for each scholarship sub project are different Please follow the "Study Abroad in China" and the website of the School of International Education of Guangxi Medical University for relevant project registration notices	Study Abroad in China: <a href="https://www.campuschina.org/index.html">https://www.campuschina.org/index.html</a> School of International Education of Guangxi Medical University: <a href="https://gjy.gxmu.edu.cn/cn/zsxc/jxj/">https://gjy.gxmu.edu.cn/cn/zsxc/jxj/</a>
Guangxi Government Full Scholarship for ASEAN Students	Undergraduate, Master's, and Doctoral Freshmen from ASEAN Countries of the Year	Full scholarship	From March to June each year, please follow the relevant notices on the website of the School of International Education of GXMU or contact the dispatch department for international students in your country	
Guangxi Medical University President Scholarship for Freshmen	Undergraduate and graduate freshmen of Self-funded	Annual one-time scholarship	There is no need to apply. After enrollment, the university will evaluate proportionally based on the scores and number of new students enrolled in the year.	Student admission scores and Chinese proficiency level (HSK scores) serve as reference standards
Guangxi Medical University Outstanding International Student Scholarship	Full time academic students studying in school	Annual one-time scholarship	Please follow the notice on campus	Awards include: Excellent Learning Award Outstanding Extracurricular Award Outstanding Student Cadre Award, etc



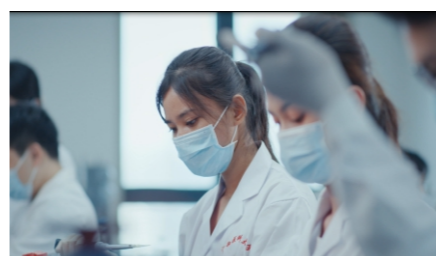
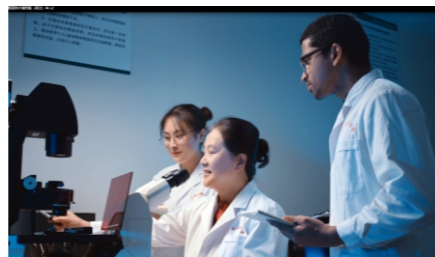
# 11 报名方法

## APPLICATION

### 在线报名 Online registration

1. 登录广西医科大学国际教育学院主页，在报名系统申请账号填报，并按要求上传报名材料。<http://210.36.48.220/Account/Login/>
2. 生成报名表，并发送到报名邮箱：[admission@gxmu.edu.cn](mailto:admission@gxmu.edu.cn) 或 [gmufso@aliyun.com](mailto:gmufso@aliyun.com)  
扫描二维码，进入报名系统。

1. Log in to the homepage of the School of International Education at Guangxi Medical University, apply for an account in the registration system, and upload the registration materials as required.  
<http://210.36.48.220/Account/Login/>
2. Generate the registration form and send it to the registration email: [admission@gxmu.edu.cn](mailto:admission@gxmu.edu.cn)  
or [gmufso@aliyun.com](mailto:gmufso@aliyun.com)  
Scan the QR code to enter the registration system



### 邮箱报名 Email registration

1. 登录广西医科大学国际教育学院“下载专区”页面，下载报名所需的所有表格
2. 完成所有表格的填写
3. 将所有完成的纸质材料转成pdf文件，制成压缩包，并以附件形式发送到报名邮箱：[admission@gxmu.edu.cn](mailto:admission@gxmu.edu.cn) 或 [gmufso@aliyun.com](mailto:gmufso@aliyun.com)  
扫描二维码，下载报名材料表格。

1. Log in to the "Download Zone" page of the School of International Education, Guangxi Medical University, and download all the necessary forms for registration
2. Complete all forms
3. Convert all completed paper materials into PDF files, create compressed packages, and send them as attachments to the registration email: [admission@gxmu.edu.cn](mailto:admission@gxmu.edu.cn) or [gmufso@aliyun.com](mailto:gmufso@aliyun.com)  
Scan the QR code and download the registration material forms





# 12 广西医科大学国际学生报名材料

## INTERNATIONAL STUDENT APPLICATION MATERIALS OF GUANGXI MEDICAL UNIVERSITY

序号	材料名称	本科生		研究生	语言生	短期医学进修生	备注
		中文授课专业	MBBS				
1	广西医科大学报名申请表*	√	√	√	√	√	如申请奖学金项目, 需要提交相应的《奖学金申请表》
2	护照复印件	√	√	√	√	√	护照有效期应在入学日期之后
3	护照照片	√	√	√	√	√	护照证件照片电子版
4	毕业证、学位证及公证件	√	√	√	√	√	仅接受中文或英文原件复印件的公证件, 如非中文或英文需要翻译件并公证
5	前置学位成绩单	√	√	√	√	√	
6	语言成绩	HSK4或以上	雅思5分 新托福61分 多邻国80分或以上	HSK5或以上		HSK4或以上	2年以内的有效成绩
7	2封推荐信			√		√	推荐人需为相当于副教授或以上职称
8	学习计划/研究计划	√	√	√	√	√	用中文或英文书写 本科生不少于200字 硕士研究生不少于800字 博士研究生不少于1000字 博士申请者的研究计划需要接收导师签字
9	体检表*	√	√	√	√	√	在中国大使馆指定医院完成的6个月内的体检结果
10	无犯罪记录证明	√	√	√	√	√	申请之日前6个月内由生源地政府开具
11	资金证明	√	√	√	√	√	奖学金申请者不需提供
12	202下载授权声明	√	√	√	√	√	根据中国教育部“来华留学管理系统”要求, 申请人必须提供

\*请登录广西医科大学网站下载相应表格, 下载页面: <https://gjy.gxmu.edu.cn/cn/xzzq/xsxzq/>

序号	CATEGORY MATERIALS	UNDERGRADUATE		POSTGRADUATE	LANGUAGE TRAINING COURSE	SHORT-TERM MEDICAL COURSE	NOTES
		CHINESE MEDIUM	ENGLISH MEDIUM				
1	*Guangxi Medical University Registration Application Form	√	√	√	√	√	To apply for a scholarship program, you need to submit the corresponding 'Scholarship Application Form'
2	Copy of passport photo page	√	√	√	√	√	Passport validity period should be after the enrollment date
3	Passport Photo	√	√	√	√	√	Electronic version of passport size photo
4	Graduation certificate, degree certificate, and notarized documents	√	√	√	√	√	Only notarized copies of original Chinese or English documents are accepted, and translations and notarization are required for non Chinese or English documents.
5	Pre degree transcript	√	√	√	√	√	
6	Language certificate	HSK4 or above	IELTS 5 New TOEFL 70 Duolingo 80 or above	HSK5 or above		HSK4 or above	Effective results within 2 years
7	2 recommendation letters			√		√	The recommender must have a professional title equivalent to associate professor or above
8	Learning Plan/Research Plan	√	√	√	√	√	Written in Chinese or English Undergraduate students should have no less than 200 words Master's degree with no less than 800 words Doctoral students should have no less than 1000 words The research plan of doctoral applicants requires the signature of the receiving supervisor.
9	*Physical Examination Form	√	√	√	√	√	Medical examination results completed within 6 months at the designated hospital of the Chinese Embassy
10	Non-criminal record	√	√	√	√	√	Within 6 months prior to the application date, issued by the government of the source country
11	Financial Proof	√	√	√	√	√	Scholarship applicants do not need to provide
12	*Declaration Form For JW202	√	√	√	√	√	According to the requirements of the "Study Abroad Management System" of the Chinese Ministry of Education, applicants must provide

\*Please log in to the website of Guangxi Medical University to download the corresponding forms. The download page is: <https://gjy.gxmu.edu.cn/en/Downloads/Students/#>

# 13 各项费用一览表

## TUITIONS AND FEES

费用项目		金额 (单位: 元)
报名费		800
学生保险		800/年
学 费	医学本科生 (全英授课)	35,000/年
	医学本科生 (汉英双语授课)	28,000/年
	医学本科生 (汉语授课)	28,000/年
	医学硕士生 (汉语授课)	35,000/年
	医学博士生 (汉语授课)	40,000/年
	汉语言进修生	12,500/年
住宿费	短期进修生 (医学)	4,000/月 10,000/3个月
	双人间住宿费	6000/年/人
	预付款	1000/人

注: 报名费、学费和住宿费入学后必须交清。

另有办理居留许可所需的健康证体检费用、居留许可办理费用等均由相关单位依规收取。

FEES		THE SUM OF MONEY(CNY)
REGISTRATION		800
INSURANCE		800/YEAR
TUITIOM	UNDERGRADUATE PROGRAM(ENGLISH MEDIUM)	35,000/YEAR
	UNDERGRADUATE PROGRAMS(CHINESE-ENGLISH MEDIUM)	28,000/YEAR
	UNDERGRADUATE PROGRAMS(CHINESE MEDIUM)	28,000/YEAR
	POSTGRADUATE PROGRAMS(CHINESE MEDIUM)	35,000/YEAR
	DOCTORAL PROGRAMS(CHINESE MEDIUM)	40,000/YEAR
	CHINESE LANGUAGE	12,500/YEAR
	SHORT-TERM MEDICAL COURSES	4,000/MONTH 10,000/3 MONTHES
ACCOMMODATION	DOUBLE ROOM	6000/YEAR/PERSON
	DEPOSIT	1000/PERSON

Note: The registration fee, tuition fee, and accommodation fee must be paid in full after enrollment.

The medical examination fees for health certificates and residence permit processing fees required for obtaining residence permits are collected by relevant department of government in accordance with regulations.

# 14 校园生活

## CAMPUS LIFE

